



VISIT OUR  
INTEGRATION  
PLATFORM

## BeauTec Activity Based Costing System // Monitoring your costs & optimize your processes

The BeauTec Activity Based Costing System (bt:abc) is a generic application framework to rapidly implement solutions such as management decision-making processes, costs allocation, costs monitoring (actual vs. planned).

### Challenge

Optimizing cost monitoring and process quality control to reduce costs, optimize production and supports compliance management and decision making. Thus Activity Based Costing is a key application within the enterprise financial management by communicating real process cost to the management and feed back financial data to optimize processes. This is extremely important to set, measure, and optimize business targets and compare with the actual situation. Corrective action can be taken quickly. This might invoke changes to your business goals and strategies.

- > How to integrate efficiently to existing, proven processes?
- > How to rapidly provide a management decision-making tool?
- > How to provide the best quality control process?
- > How to estimate the total cost of operating?
- > How to identify a group of activities within your organization?
- > How to assign cost to each activity
- > How to integrate different information sources and operational data?
- > How to integrate with existing applications?
- > How to get a highly customized solution cost effectively?
- > How to be highly flexible in modeling, but running minimal maintenance.

### Solution

The bt:abc provides a rich application framework to efficiently implement solutions for management decision-making processes, process quality control, cost allocation, cost monitoring and reporting. Running on the industry proven BeauTec Integration Platform, bt:abc easily integrates with existing applications (ERP's, Legacy...), BPM solutions (Business Process Management) and operational data. All advantages of the storage and aggregation capabilities of the BeauTec Object Warehouse (bt:owh) are directly available. The graphical front-end of bt:abc is based on the BeauTec Explorer (bt:exp) using its state-of-the-art graphical features, presentation components, and seamless integration into the Web.

- > **easy-to-use and at the same time extremely flexible**
- > **product or unit oriented view**
- > **data driven instruction sheets**
- > **generic XML/HTML reporting**
- > **views, navigation and reporting reflect user role and function**
- > **automatic notification**
- > **seamless integration with other applications (ERP...), BPM solutions, data-sources, and the Web**

### Areas

Since 2002, the bt:abc has been used to implement solutions for financial management such as

- > **Management decision-making system**
- > **Quality control system**
- > **Costs monitoring**
- > **Reporting**



## BeauTec Activity Based Costing System // Features and benefits

### Features

**Cost– and Profit Center hierarchy //** Cost– and Profit Centers are grouped in hierarchies. Various aggregations within the hierarchies are provided. The hierarchies can be imported from external systems in order to promote reuse of data from existing systems such as SAP.

**Account hierarchy //** Accounts are associated to cost centers and hence grouped in a cost center hierarchy. Monthly account values are imported from external systems.

**Complete history of data //** The history of all values and calculations is available, based on the customer defined frequency of calculation. A time navigation makes past values easily accessible.

**Discharging activity costs //** Costs of activities, which can be defined in each cost center or model, can be discharged to any cost– or profit center or subsequent model.

**Configurable distribution rules //** Each activity can have one or many distributions. A distribution defines an absolute amount or percentage of the activity that is to be discharged the target(s). If all sub-centers of a target center are charged, the costs are split up for each target center. The calculation of those split-up percentages is based on distribution rules, e.g. on the number of clients per target center.

**Category based distributions //** The redistribution process discharges activity costs of cost centers in an order that can take the category of an activity into account. The process is iterated. Distributions can, if required, affect only a certain category of the target center.

**Reporting //** The reporting capabilities of bt:abc allow the detailed inspection of the redistribution process, e.g. which amount was moved from which cost center/ activity to which target center.

**Process Simulation models //** A second dimension to define ABC is based on a flexible and hierarchical process model. Within the model, duration, resources, and therefore cost, can be defined per object. Structural aggregation based on standard aggregation rules or specifically determined rules is supported. Timely aggregation is part of the standard solution.

**Streams //** Streams connect model objects on any level. Therefore detailed process flows can be defined and at the same time more abstract calculations as well. Each stream provides specific connection rules that can flexibly be defined based on specific needs.

**Existing BPM //** Companies constantly optimizing their business processes might use today an existing BPM (Business Process Management) tool. The BeauTec solution smoothly integrates with any existing system due to its flexible technical connectivity layers. Therefore the current business model can be used and maintained in the source BPM system, using the bt:abc for interactive cost accounting, possibly feeding back results into the BPM.

### Benefits

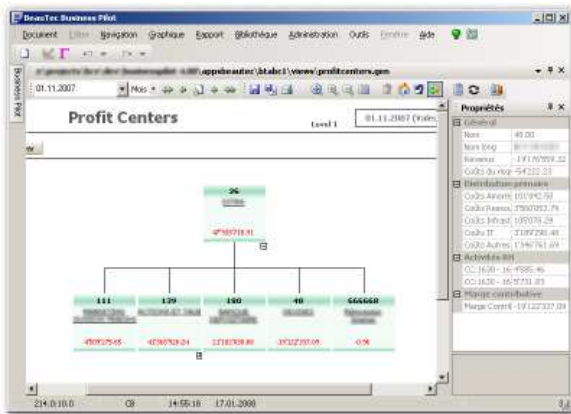
- > Lower operating costs
- > Less incidents
- > Fulfill legal obligations
- > Historized documentation of the plant operations
- > Exact instructions to the operators
- > Decision making support for the management
- > Improved information flow shift to shift, unit leader to upper management, planning to operation
- > Comparison of actual vs. planned

# BeauTec Activity Based Costing System //

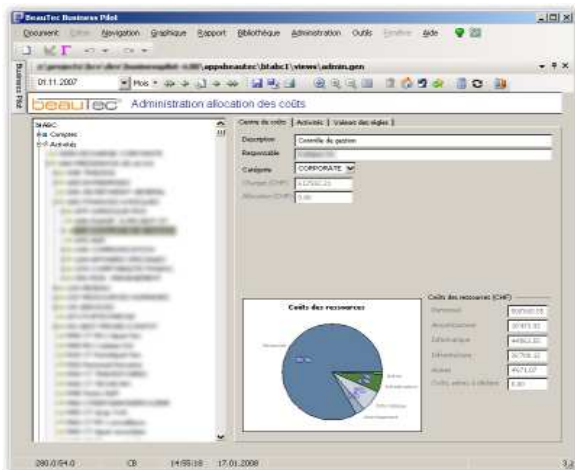
## Related products

### Sample Screens

The bt:abc provides an easy-to-use interface, which enables the user to learn the system quickly and to use it efficiently.



Organigram with profit centers. The right hand side displays detailed data of the current profit center.



### Related products

**bt:exp //** BeauTec Explorer. A visualization and authoring tool for creating rich and highly interactive graphical user interfaces.

**bt:odm //** BeauTec Object Data Model. Object oriented data management using standard relational databases such as Oracle.

**bt:owh //** BeauTec Object Warehouse. Ready to use class and object structures for the bt:odm.

**bt:ems //** BeauTec Event Management System. Dynamic technical and business process modeling.

**bt:msgSystem //** BeauTec Messaging System. Automatic information broker and notification.

**bt:indicator //** BeauTec Key Performance Indicator. Presentation objects and calculation models for various performance reports and dashboards.

### About BeauTec

BeauTec is a project services and software products company that enables petroleum refining, petrochemical and other industries to achieve total integration of information sources and applications, from business systems, ERP and supply chain management through to plant information, production planning, scheduling and operations decision support.

### For more information

For more details about the bt:exp and other related BeauTec products, visit [www.beautec.eu](http://www.beautec.eu).